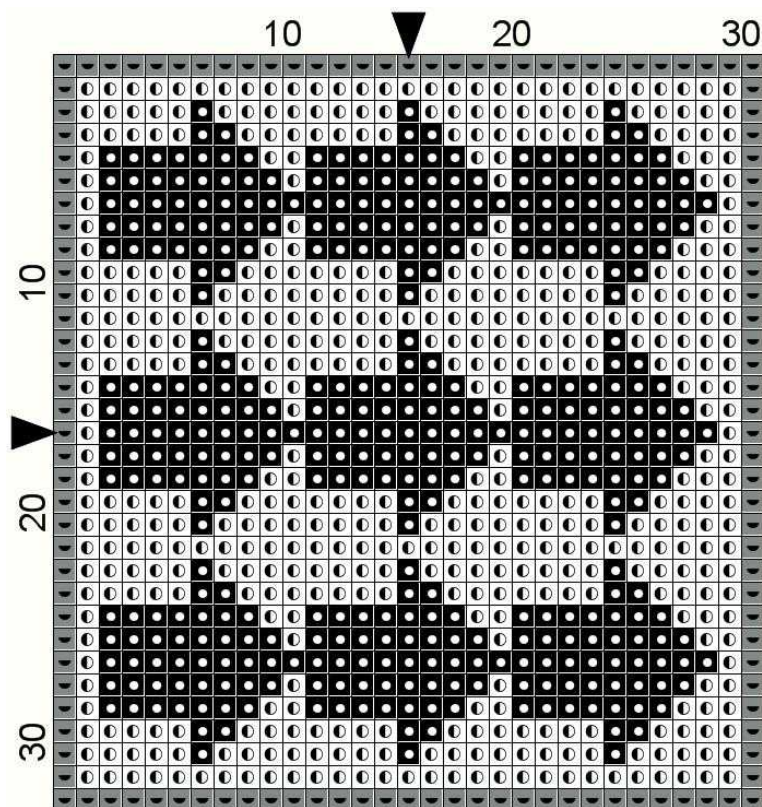


Free Monthly Mini-Chart

from www.tbxstitch.com

August 2011



Fabric: 14 count Aida or 28 count evenweave

Grid Size: 31W x 33H

Design Area: 2.21" x 2.36" (31 x 33 stitches)

Legend: Stitches

- DMC 310 black
- DMC White white
- ◐ DMC 169 pewter - lt

Optical Illusion 2: White or Black Arrows?

© Thomas Beutel 2011

STITCHING INSTRUCTIONS

The design is worked on 14 count Aida cloth or alternatively on 28 count evenweave over two threads with two strands of floss.

Terms of Use

The Free Monthly Mini-Chart ("Free Chart") may be used for personal use only or in finished counted cross-stitch work given as a gift. The Free Chart may not be produced or incorporated in any counted cross-stitch design, or reproduced in any other way, for sale or distribution without written permission. For permission, contact Thomas Beutel using the contact form at www.tbxstitch.com.