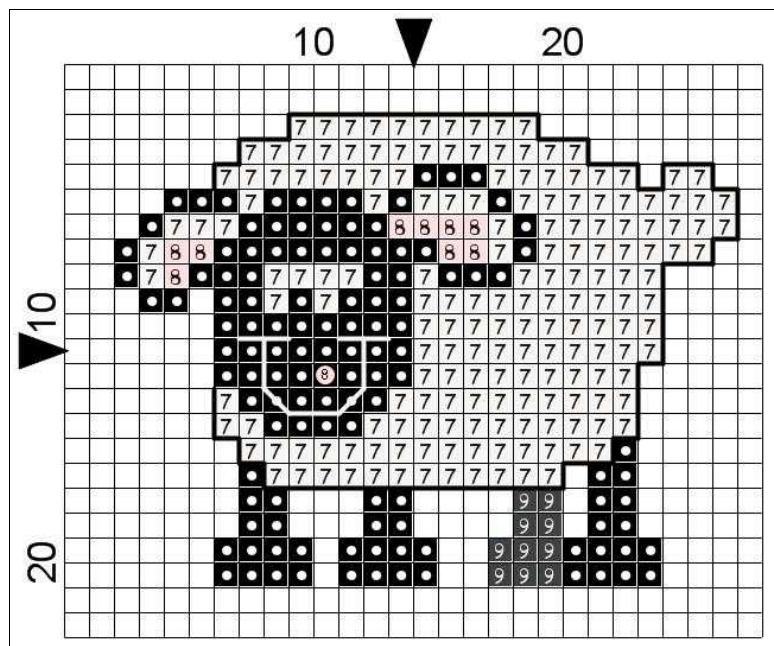


# Free Monthly Mini-Chart

from [www.tbxstitch.com](http://www.tbxstitch.com)

February 2012



**Fabric:** 14 count Aida or 28 count evenweave  
**Grid Size:** 28W x 23H  
**Design Area:** 1.79" x 1.36" (25 x 19 stitches)

**Legend: Stitches**

●	DMC 310	black
7	DMC Ecu	ecru
8	DMC 3713	salmon -vy lt
9	DMC 413	pewter gray - dk

**Legend: FrenchKnots**

DMC 3713	salmon -vy lt
----------	---------------

**Legend: BackStitch Lines**

DMC 310	black	sheep outline
DMC Ecu	ecru	sheep mouth

**Small Silly Sheep**  
 © Thomas Beutel 2012

## STITCHING INSTRUCTIONS

The design is worked on 14 count Aida cloth or alternatively on 28 count evenweave over two threads with two strands of floss.

## Terms of Use

The Free Monthly Mini-Chart ("Free Chart") may be used for personal use only or in finished counted cross-stitch work given as a gift. The Free Chart may not be produced or incorporated in any counted cross-stitch design, or reproduced in any other way, for sale or distribution without written permission. For permission, contact Thomas Beutel using the contact form at [www.tbxstitch.com](http://www.tbxstitch.com).