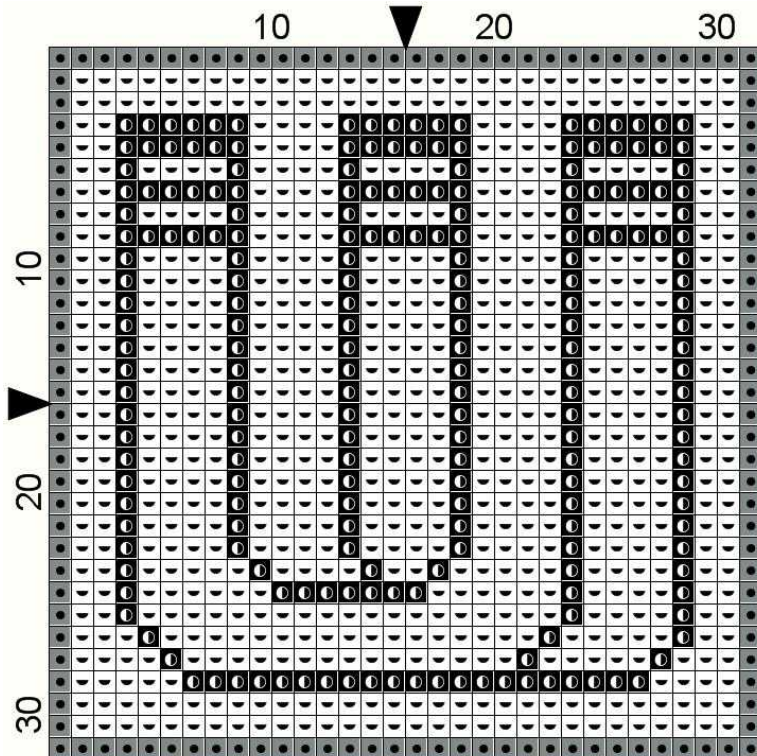


# Free Monthly Mini-Chart

from [www.tbxstitch.com](http://www.tbxstitch.com)

October 2011



**Fabric:** 14 count Aida or 28 count evenweave

**Grid Size:** 32W x 32H

**Design Area:** 2.29" x 2.29" (32 x 32 stitches)

### Legend: Stitches

- DMC 169 pewter - lt
- DMC 310 black
- DMC White white

## Optical Illusion 3: Impossible Object?

© Thomas Beutel 2011

### STITCHING INSTRUCTIONS

The design is worked on 14 count Aida cloth or alternatively on 28 count evenweave over two threads with two strands of floss.

### Terms of Use

The Free Monthly Mini-Chart ("Free Chart") may be used for personal use only or in finished counted cross-stitch work given as a gift. The Free Chart may not be produced or incorporated in any counted cross-stitch design, or reproduced in any other way, for sale or distribution without written permission. For permission, contact Thomas Beutel using the contact form at [www.tbxstitch.com](http://www.tbxstitch.com).